

# OFI Fund Global Equity Natural Resources

EQUITIES • INTERNATIONAL • NATURAL RESOURCES

OFI Fund Global Equity Natural Resources is a fund invested in **equities in the natural resources sector worldwide**. This fund aims to **increase the capital invested over a recommended 5-year investment horizon**.

To achieve this objective, the management team uses a **100% top-down approach**, with the conviction that the allocation between the various sub-sectors is the main source of performance on the natural resources market. This approach is designed to determine the exposure to the benchmark's<sup>(1)</sup> sub-sectors according to the **environment and market outlooks**.

The fund offers **access to natural resources**, a sector that currently has **attractive long-term prospects**. The managers invest on this market through equities, to **avoid the constraints of direct exposure and to collect the dividends paid out by companies**.

<sup>(1)</sup> 1/3 TR CRB Precious Metals Producers Index NR EUR + 1/3 TR CRB Industrial Metals Producers Index NR EUR + 1/3 TR CRB Energy Producers Index NR EUR  
For more information: [www.crbequityindexes.com](http://www.crbequityindexes.com)

## Investment universe

Investments in three main sectors split into 16 sub-sectors



PRECIOUS METALS

- Gold
- Silver
- Palladium
- Platinum



INDUSTRIAL METALS

- Steel
- Aluminium
- Copper
- Iron
- Nickel
- Zinc



ENERGY

- Equipment and services
- Exploration and production
- Integrated gas and oil
- Petrochemicals
- Refiners
- Storage and transport



### EXCLUDED:

- Agricultural commodities
- Companies with more than 30% coal-related revenue

## Characteristics

### ISIN CODES

IXL EUR-share: LU0875273285 • IXL USD-share: LU111109309  
I EUR-share: LU0579278010 • I USD-share: LU0579279844  
R C EUR-share: LU1698011001 • RF-share: LU1800172832

### LEGAL FORM

Sub-fund of a UCITS V-compliant Luxembourg SICAV (open-ended investment company)

### AMF CLASSIFICATION

None

### INCEPTION DATE

21 January 2011, regulated by the CSSF  
Change of management strategy on 13 July 2017

### CURRENCY

Euro

### VALUATION FREQUENCY

Daily

### ASSET MANAGEMENT COMPANY

OFI Lux • Delegation: OFI AM

### DISTRIBUTION POLICY

Capitalisation

### ENTRY / EXIT CHARGE

1% max / None

### ONGOING CHARGE

I EUR-share: 1.12% • I USD-share: 1.16%  
IXL EUR-share: 0.86% • IXL USD-share: 0.82%  
R C EUR-share: 1.93% • RF-share: 1.47%  
(last fiscal year, December 2018)

### MANAGEMENT FEES

I-share: 0.80% max • IXL-share: 0.50% max

### OUTPERFORMANCE FEES

20% of returns above the benchmark (1% max. if the performance is negative)

### MINIMUM SUBSCRIPTION AMOUNT

IXL-share: €5 000 000 • I-share: €50 000 • R-share: None

### SRRI\*



## Management team



**Benjamin LOUVET**

Commodity Fund Manager



**Olivier DAGUIN**

Commodity Fund Manager

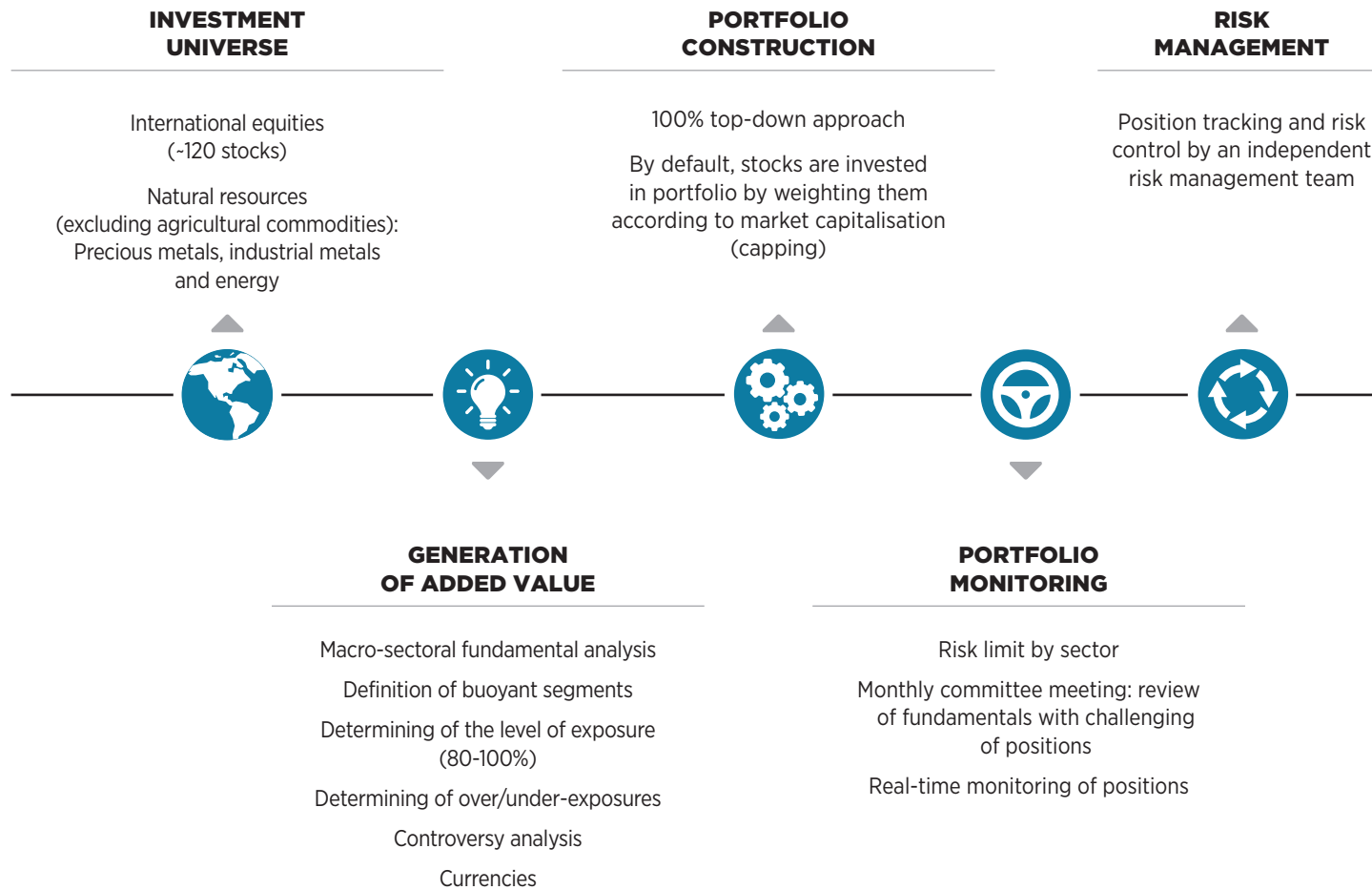
## Advantages

- A market of opportunities to be seized through a medium-/long-term allocation
- Protection against inflation
- An innovative approach based on a macro-sectoral fundamental analysis
- Know-how developed by a team of recognised experts

## Risks

- Capital loss
- Equity and market
- Small- and mid-cap
- Counterparty
- Interest rate
- Credit
- Derivative
- Emerging market
- Currency

Current investment team, subject to change. For more information, visit [www.ofi-am.fr](http://www.ofi-am.fr) • \*Synthetic risk and reward indicator (SRRI) is an indicator going from 1 to 7 and corresponding to increasing risk levels. Risk and performance category indicated in this document is subject to change. This category is determined by the application of a regulatory methodology. For more details about this methodology, please refer to the Key investor information document (KIID).



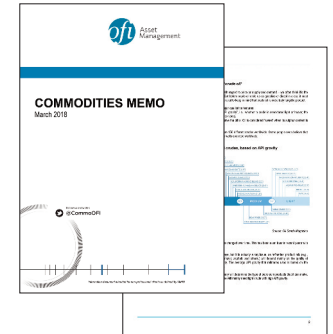
## RECOGNISED AND SOUGHT-AFTER EXPERTISE

The management team is regularly consulted about commodity market operations and practices.

It delivers regular research through:

- Economic reports;
- Video commentaries;
- Regular conferences.

Benjamin Louvet is a commentator of choice for BFM Business, Radio Classique, BFM TV and LCI, and has been interviewed by Le Figaro and Challenges, amongst others.



This is a promotional document intended solely for professional and non-professional clients as defined in the Markets in Financial Instruments Directive, and should not be given to the end client. It may not be used for any other purpose than that for which it has been designed and may not be reproduced, distributed or communicated to third parties in part or in full without the prior written authorisation of OFI Asset Management.

No information contained in this document may be interpreted as having any contractual value. This document is produced purely for illustrative purposes. It constitutes a presentation prepared and produced by OFI Asset Management based on sources that it considers reliable. The fund/s mentioned in this document has/have been approved by the AMF or the CSSF and are authorised for distribution in France and in other countries where the law authorises this. Before making any

investment, potential investors should verify whether they are legally entitled to subscribe for the fund in question. Potential subscribers must be provided with the relevant KIID before making any subscription. The operating rules, risk and reward profile, and fees relating to investments in a fund are set out in the fund's KIID. The KIID and latest periodical reports are available on request from OFI Asset Management. OFI Asset Management reserves the right to modify the information presented in this document at any time and without notice. OFI Asset Management may not be held liable for any decision made or not made based on information contained in this document, or the use that may be made thereof by a third party. In the event that a fund is subject to a particular tax treatment, it should be noted that such treatment depends on the individual situation of each client and may be subject to change in the future.

## CONTACT

+33 (0)1 40 68 17 17  
contact@ofi-am.fr

Follow us!

