

OFI Fund RS European Equity Positive Economy

EQUITIES • EUROPE • POSITIVE ECONOMY

The OFI Fund RS European Equity Positive Economy is **invested in European companies** which are **involved in the Positive Economy and positioned to have a positive impact on the environment and the society** as well as the future generations. The objective is to have a positive impact alongside financial returns.

The portfolio managers have defined a **universe of companies active in the positive economy based on four main themes**: the energy transition, the preservation of natural resources, health and well-being and improvements in security and social inclusion. They aim to select growing and innovative niche players. Companies are analysed according to the risks (ESG analysis criteria and controversy monitoring) and opportunities generated by the exposure of their businesses to the positive economy and their Corporate Social Responsibility policy meeting the sustainable development goals set by the UN.

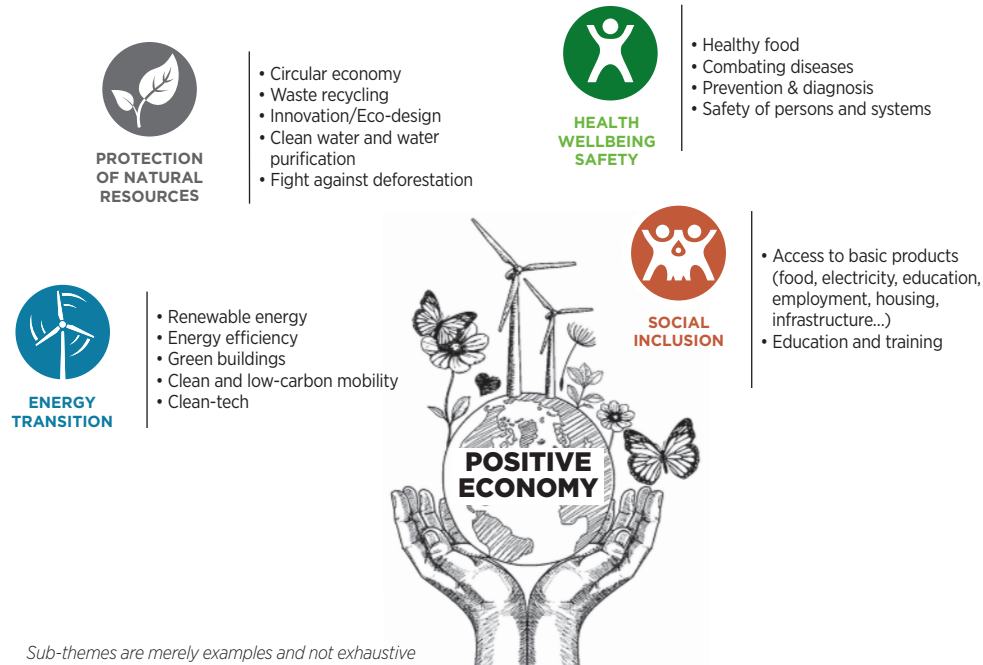
The fund's objective is to outperform the Stoxx Europe 600 Net Return index⁽¹⁾ over a recommended 5-year investment horizon.

⁽¹⁾For more information: www.stoxx.com

The Positive Economy, a project for society

Many fields for engagement in sustainable development

60 sub-themes are represented in the positive economy universe



Characteristics

ISIN CODES

GR-share: LU1753039368 • GI-share: LU1753039285

WKN CODES

GR-share: A2JBQX • GI-share: A2JBQW

LEGAL FORM

Sub-fund of OFI Fund, a UCITS V compliant Luxembourg SICAV

AMF CLASSIFICATION

None

INCEPTION DATE

8 April 2015 • Investment management reorientation 13 July 2017, regulated by CSSF

CURRENCY

Euro

VALUATION FREQUENCY

Daily

ASSET MANAGEMENT COMPANY

OFI Lux • Delegation to OFI AM

DISTRIBUTION POLICY

Capitalisation / Distribution

ENTRY / EXIT CHARGES

2% max / None

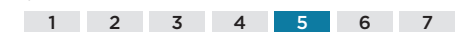
MANAGEMENT FEES

GR-share: 1.9% max. • GI-share: 1% max.

MINIMUM SUBSCRIPTION AMOUNT

GR-share: 1 000 € • GI-share: 500 000 €

SRRI*



Lower risk, potentially lower reward

Higher risk, potentially higher reward

Management team



Béryl BOUVIER DI NOTA, SFAF
Deputy Head of European equities



Lionel HEURTIN, CFA
Portfolio Manager - Analyst



Jean-Marie PEAN
Impact Investing Analyst

Advantages



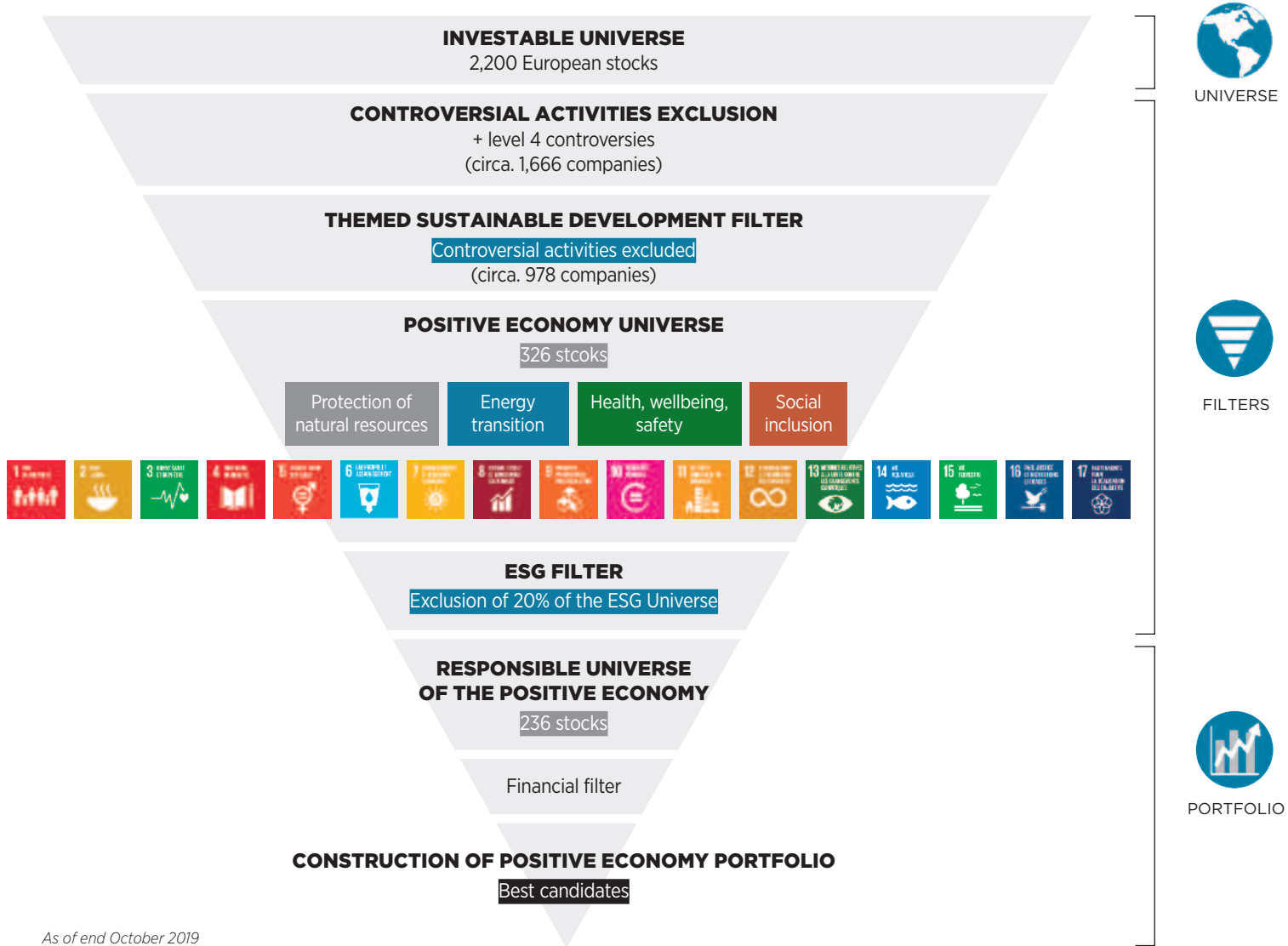
- Investing in the virtuous growth of the future
- Selecting the companies involved in the Sustainable Development Goals (SDGs) of the United Nations
- Responsible investing with a double objective: performance and social & environmental impact

Risks

- Capital loss
- Equity
- Small caps
- Currency
- Counterparty
- Discretionary management

Current investment team, subject to change. For more information, visit www.ofi-am.fr • *Synthetic risk and reward indicator (SRRI) is an indicator going from 1 to 7 and corresponding to increasing risk levels. Risk and performance category indicated in this document is subject to change. This category is determined by the application of a regulatory methodology. For more details about this methodology, please refer to the Key investor information document (KIID).

Investment process



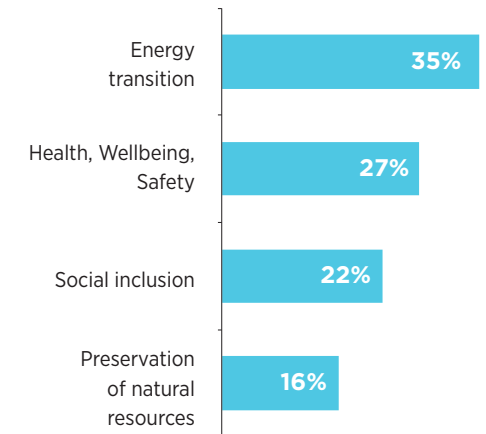
FOCUS ON THE INVESTMENT UNIVERSE

Universe of 420 European stocks

Niche players and innovative companies:

- An all caps fund with a small & mid-cap bias (50% of the universe less than €5bn)
- A sector bias towards industry, health and technology
- A high level of positive contribution from each company (revenues, investment, EPS)

BREAKDOWN OF THEMES IN THE PORTFOLIO



As of end October 2019

Source: OFI AM as of end October 2019



This is a promotional document intended solely for professional clients as defined in the Markets in Financial Instruments Directive. It may not be used for any other purpose than that for which it has been designed and may not be reproduced, distributed or communicated to third parties in part or in full without the prior written authorisation of OFI Asset Management. No information contained in this document may be interpreted as having any contractual value.

This document is produced purely for illustrative purposes. It constitutes a presentation prepared and produced by OFI Asset Management based on sources that it considers reliable. The fund/s mentioned in this document has/have been approved by the AMF or the CSSF and are authorised for distribution in France and in other countries where the law authorises this. Before making

any investment, potential investors should verify whether they are legally entitled to subscribe for the fund in question. Potential subscribers must be provided with the relevant KIID before making any subscription. The operating rules, risk and reward profile, and fees relating to investments in a fund are set out in the fund's KIID. The KIID and latest periodical reports are available on request from OFI Asset Management. OFI Asset Management reserves the right to modify the information presented in this document at any time and without notice. OFI Asset Management may not be held liable for any decision made or not made based on information contained in this document, or the use that may be made thereof by a third party. In the event that a fund is subject to a particular tax treatment, it should be noted that such treatment depends on the individual situation of each client and may be subject to change in the future.

CONTACT

+49 69.756193-46

asset.management@olb.de
Theodor-Heuss-Allee 108,
60486 Frankfurt am Main

